

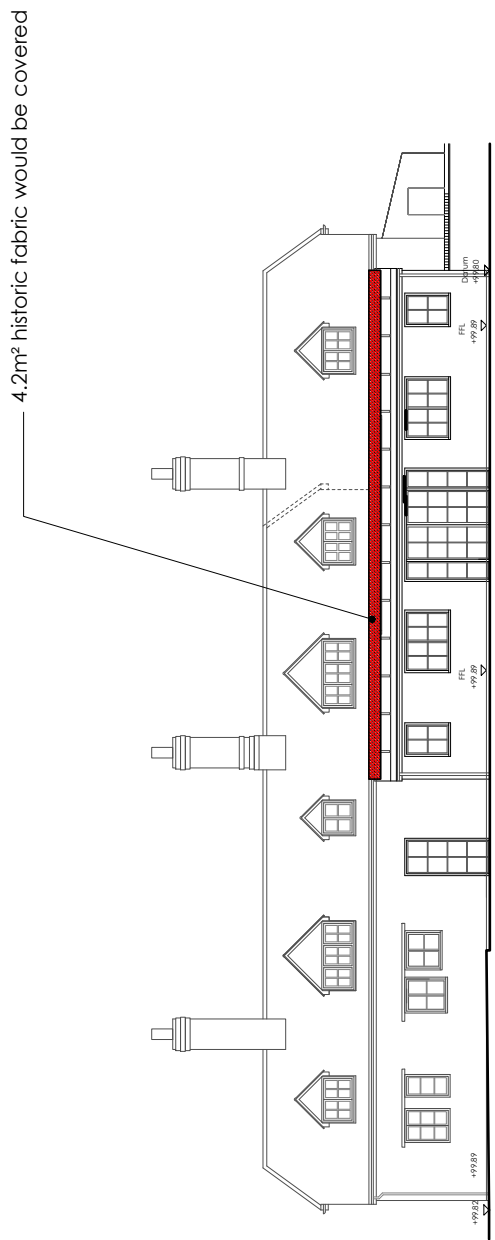
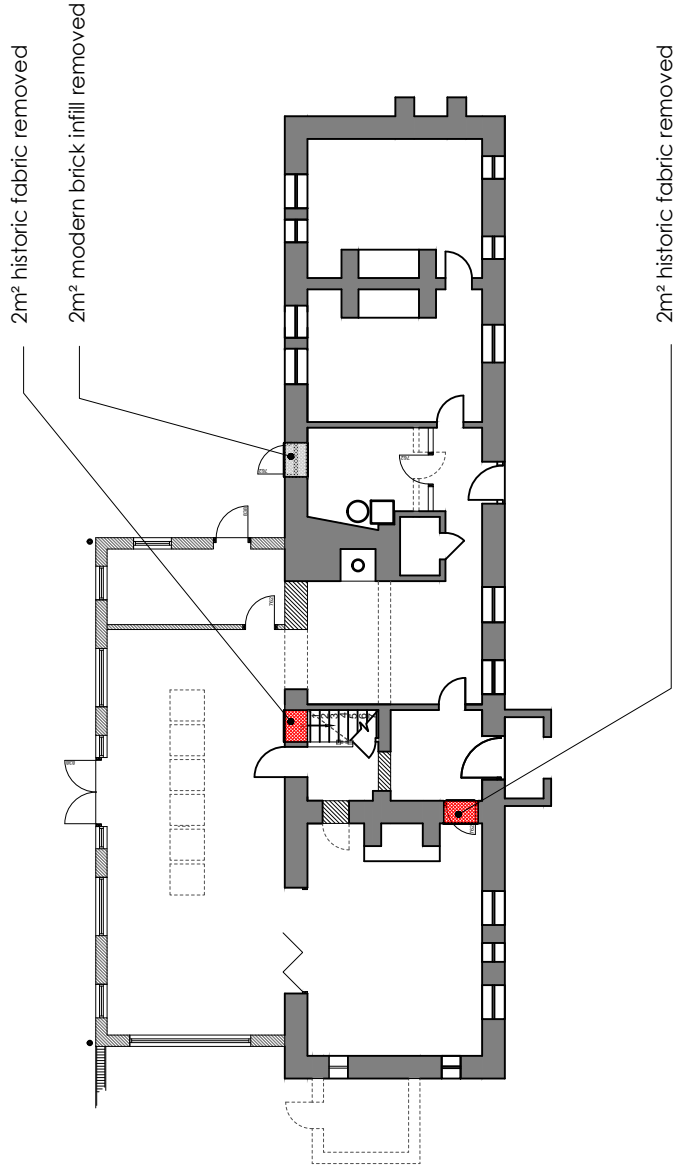
NOTES

THIS DRAWING IS THE COPYRIGHT OF THE ARCHITECTS AND MAY NOT BE REPRODUCED WITHOUT PERMISSION

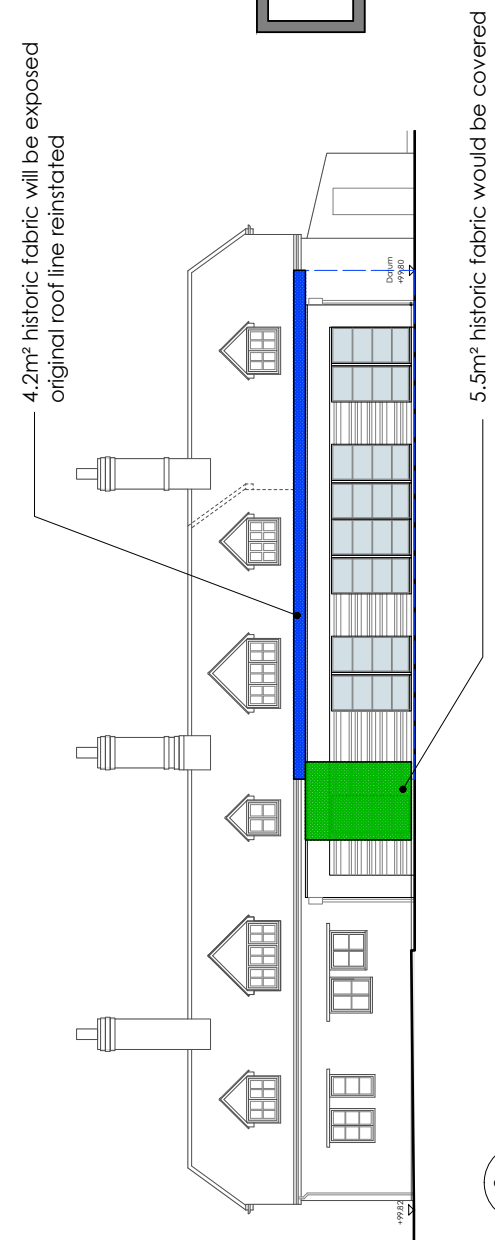
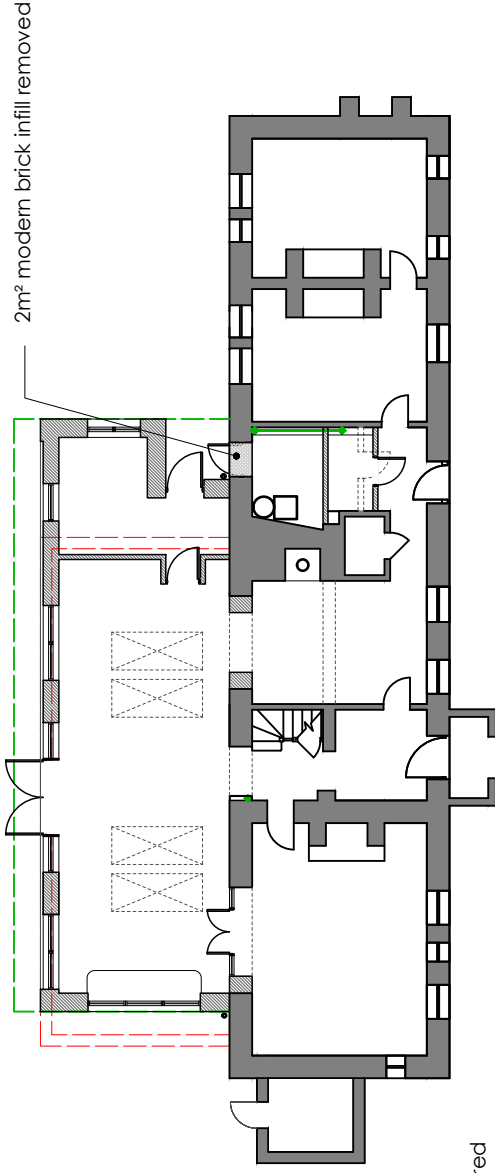
THE CONTRACTOR IS RESPONSIBLE FOR CHECKING DIMENSIONS, TOLERANCES AND REFERENCE. ANY DISCREPANCIES TO BE CHECKED WITH THE ARCHITECT BEFORE PROCEEDING WITH THE WORKS

WHERE AN ITEM IS COVERED BY DRAWINGS TO DIFFERENT SCALES, THE LARGER SCALE DRAWING IS TO BE WORKED TO DO NOT SCALE FROM DRAWING, FIGURED DIMENSIONS TO BE WORKED TO AT ALL TIMES

ALL WORK AND MATERIALS TO BE IN ACCORDANCE WITH THE BUILDING REGULATIONS AND TO COMPLY WITH THE RELEVANT CODES OF PRACTICE AND BRITISH STANDARDS

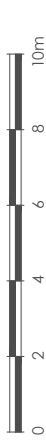


1 16/01015/FULLN APPROVED SCHEME
scale 1:200
P213



2 PROPOSED SCHEME
scale 1:200
P213

APPROVED	
New door opening	2m ²
New stair opening	2m ²
External eaves removed	4.2m ²
Total historic fabric loss	8.2m²
PROPOSED	
External historic fabric covered	5.5m ²
Total historic fabric loss	5.5m ²
External eaves reinstated	4.2m ²
Net historic fabric loss	1.3m²



DATE	DETAILS	DATE	REVISION

WILLOW COTTAGE
APPROVED AND PROPOSED SCHEME
HISTORIC FABRIC COMPARISON

date	client
JAN 2017	Mr & Mrs W MacLachlan
scale	drawing no.
1 : 100 @ A3	17/662 / P213
	revision
	-

RICHMOND BELL ARCHITECTS LTD
CASTLE CHAMBERS, 47 CASTLE STREET
SALISBURY SP1 3SP
TEL: 01722 324 835 www.richmondbellarchitects.com